



**This is a facility that asks you to think about, preserve and connect with our hometown.**

Dear visitor,

We would like to share with you the land of Tomioka Town and the events we have experienced over the past 10 years.

Until March 11, 2011, the town was a bustling scene of "normal everyday life".

However, the nuclear accident caused by the Great East Japan Earthquake suddenly took away the normalcy of life in Tomioka Town. On March 12, the townspeople were forced to leave their hometown, unprepared to live in a different area.

This museum showcases various features of Tomioka Town, as well as of the natural and nuclear disasters that occurred in this area. Please take a look at the exhibitions and note the similarities and differences between your hometown and Tomioka Town.

Then, imagine what would happen if a complex disaster like the one in Tomioka occurred in your area.

It just might change the way you look at the future.

◆ **From Tokyo**

- Tokyo Station→JR Joban Line Limited Express Hitachi (approx. 3 hrs.)→Tomioka Station→
- Tokyo Station→Express bus (approx. 4 hrs. 20 mins.)→Tomioka Office→
- Joban Expressway/general roads (approx. 3 hours 15 minutes)→

◆ **From Sendai**

- Sendai Station→JR Joban Line Limited Express Hitachi (1 hr. 30 mins.)→Tomioka Station→
- Joban Expressway/general roads (about 1 hr. and 40 mins.)→

◆ **From Iwaki**

- Iwaki Station→JR Joban Line (approx. 40 mins.)→Tomioka Station→
- Iwaki Station→Shin Joban Kotsu Bus (approx. 1 hr. 10 mins.)→Tomioka Station→

◆ **From Tomioka Station to The Historical Archive Museum of Tomioka (approx. 2.3 km on general roads)**

- Taxi or loop bus (approx. 5 mins.)

The Historical Archive Museum of Tomioka



Facebook



Instagram

# The Historical Archive Museum of Tomioka

 3.11Densho Road Disaster Memorial Facilities



**The Historical Archive Museum of Tomioka**

- [ Open ] 9:00 a.m. to 5:00 p.m. (Last admission: 4:30 p.m.)
- [ Closed ] Monday (Tuesday if Monday is a national holiday), year-end and New Year holidays
- [ Address ] 760-1, Motooka, Otsuka, Tomioka Town, Futaba County, Fukushima Pref.
- [ TEL ] 0240-25-8644

### Storage Area

This is a place for storing valuable local historical and cultural artifacts that have been preserved with the cooperation of the town's residents. There is also a room for organizing and researching these artifacts in cooperation with universities and other institutions.

The origins of Tomioka Town and the changes in the area brought about by the complex disaster will be described.

### Special Exhibition Room

### Exhibition Room

In addition to conveying the history and features of the area centered on Tomioka Town, the records of the earthquake and nuclear disaster that changed the fate of the region will be passed on as a major page of history, and the town's experience will be shared with the world in the future.

### Town Gallery

This is a place where townspeople, local residents and visitors can come together and comfort each other. Workshops and other activities are also held.

#### 《 Main features 》

- The central shopping street and basic necessities
- Message display
- Tomioka in 3D (MReal)
- Theater (3 programs)

- ① The Great East Japan Earthquake: Tomioka Town's Records
- ② Words From the Heart
- ③ New Beginnings (Animation)



#### Please help us preserve our local resources and earthquake heritage!

Tomioka Town has established an "Ordinance on the Preservation of Earthquake Disaster Heritage," and has organized a history and culture preservation project team to promote the preservation of our earthquake disaster heritage.

Please continue to share with us information on local resources that tell the history of the town. We look forward to your continued support.



#### Inherited history – The fire festival at Hayama Shrine

The fire festival at Hayama Shrine is said to have a history of 400 years. On the night of August 15, it is tradition for men carrying torches to run up Hayama mountain. What is the history of Tomioka Town? What are its origins and features? The history of Tomioka Town will be extracted from a variety of sources, including ancient documents, earthenware, plants, fossils and interview records.

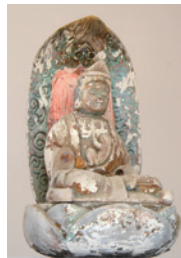


#### Disaster-stricken police car – Futaba No. 31

This police car, in which two police officers risked their lives to guide the evacuation of the townspeople, was found near the mouth of the Tomioka River after being swept away by the tsunami. With the understanding of the bereaved families and the Fukushima Prefectural Police, as well as the cooperation of local residents, the car was preserved. The memory of the disaster and the courageous actions of the two officers will be passed on to future generations.

#### Daily life in the area – Koyasu Kannon figure

Many local residents prayed for the safe delivery of their children at the Koyasu Kannon. It is tradition for pregnant women to borrow a hanten (short winter coat) and pillow from Kannon when they visit the shrine. After the baby is safely delivered, it is customary to make an offering of double the number of pillows as a token of gratitude. Visitors can experience the culture of Tomioka Town rooted in daily life, including beliefs and customs.



#### The complex disaster seen from the perspective of clocks

The town has preserved a number of clocks. These clocks took a long time to be preserved. Due to the peculiar nature of the nuclear disaster area, recovery and reconstruction could not be started immediately after the earthquake. Despite being similarly affected, it can be seen that each clock has a different story to tell about the disaster.

